



# SmartAL

Smart  
Assisted  
Living

Improved health,  
safety and well-being  
of people



# What is SmartAL?

SmartAL is a technological ecosystem simplifying people's daily lives from the health and social point of view.

## ICT platform for Smart Assisted Living

The SmartAL solution is based on different services, supported on various technologies, with the goal to address everyone in the most friendly way. In fact, the SmartAL architecture allows a wide use-case commercial scenarios.

Having multilingual and personalized user interfaces this solution may be customized for each client' needs.

At home, the TV solution allows the user to acquire data monitored by health sensors, access health records and receive alerts and reminders.

Complementing the TV solution, there's an Android application that can be used to acquire and process data monitored by the same health sensors, and transmit them to the central server.

This module also triggers alerts if the values exceed the previously established limits.

There is also a web application in which the caregiver can see in real time the monitored data as well as set up and configure data thresholds, daily tasks, alerts and other health and social information.

This solution allows the end-user to reach a high degree of independence, autonomy and dignity, feeling safe both inside and outside their home, having an ICT-friendly tool to help manage their daily life, including the prevention and control of diseases, chronic or not.

## Who benefits from it?



Seniors & Chronic Patients



Social and Health Caretakers/Institutions



Families & friends



Person (in general)



Homebound Students & Schools



Private professionals & Service SME



# Business benefits

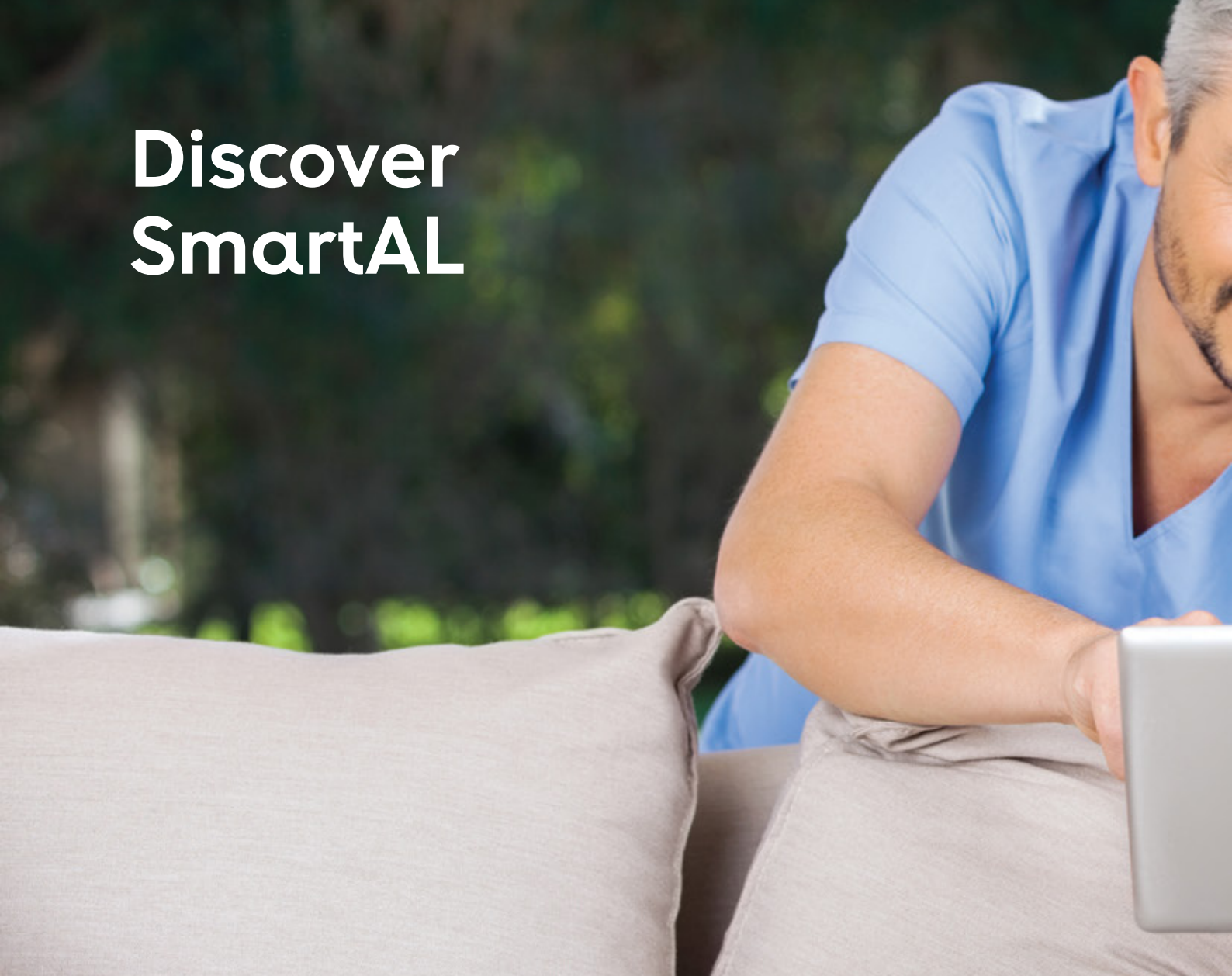
SmartAL was designed to be a flexible solution to address several Assisted Living business cases. From seniors to children, this product helps people with care needs in their daily lives, as well as their families, professionals and health / social care organizations.

Examples of SmartAL main features:

- Extend the time people can live in their preferred environment by increasing their autonomy, self-confidence and mobility;
- Support the maintenance of health and functional capabilities of each end-user, namely elderly individuals;
- Promote a better and healthier lifestyle for individuals at risk;
- Improve “always-on” interaction between each person and his social ecosystem, in special with their caregivers, preventing social isolation and increasing their feeling of personal security;
- Stimulate the growing of supported clients (more revenues), for individual professionals and SME;
- Allow students with temporary or permanent health problems to keep up with their curriculum/school from their homes.



# Discover SmartAL



## SmartAL services



Daily Activities  
Management



Vital Signals  
Monitoring



Alerts,  
notifications and  
reminders



Surveys for social  
and health  
evaluation



Videoconference,  
chat and file sharing



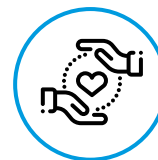
Video tutorials



Reports and  
Statistical  
Indicators



Home  
Automation



High protection  
of personal &  
sensitive  
information





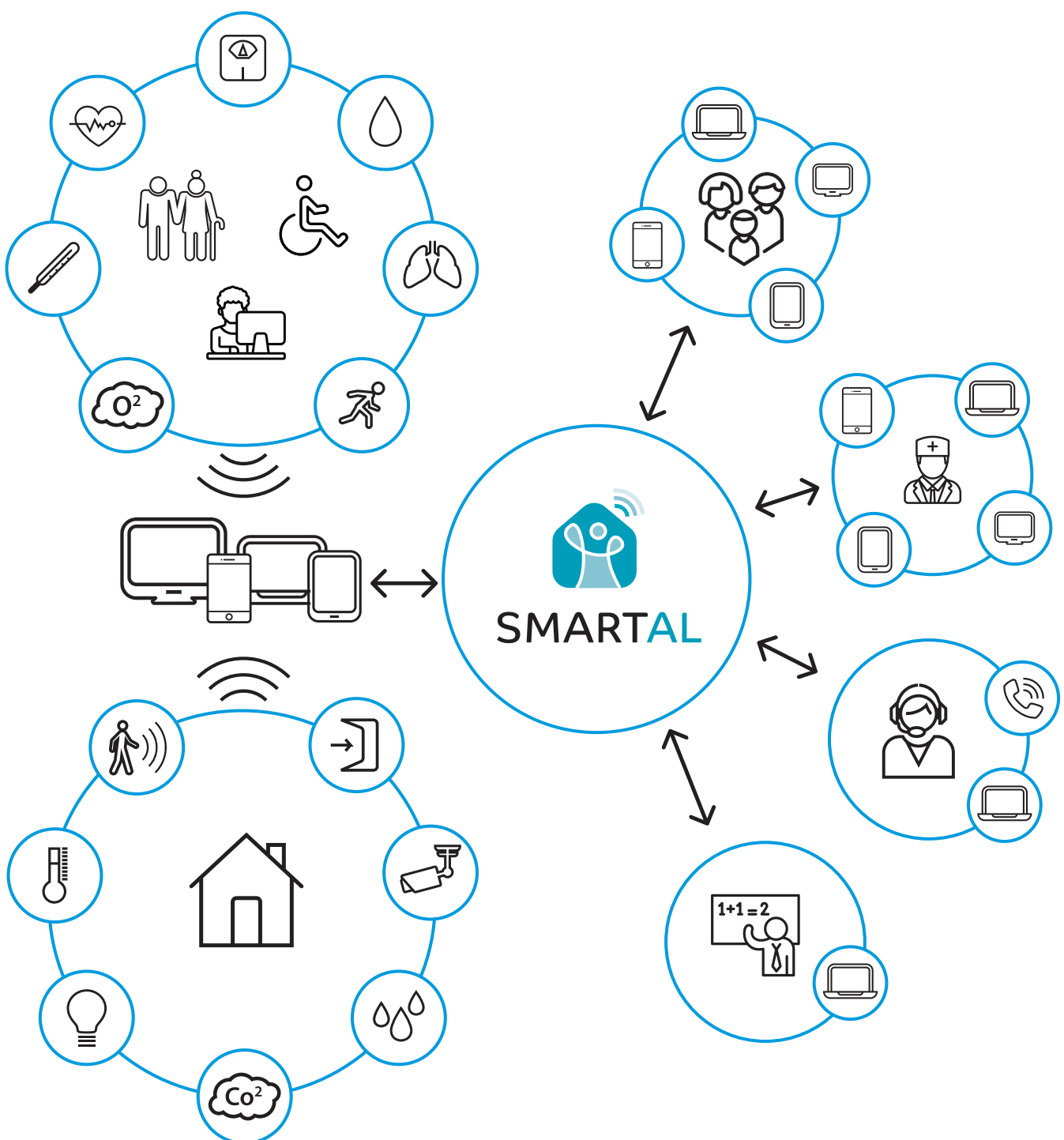
## SmartAL quality attributes

- Flexible business models, from self-monitoring to multiple caretakers;
- Platform supported in the “Cloud” or in the caretaker/corporation premises;
- Multi-screen and multilingual device interfaces;
- Friendly and dynamically personalized graphical interfaces;
- Highly secure data transmission from the producer to the authorized consumer(s);
- Daily tasks and agenda management to all ecosystem’s users (end-user and caretakers);
- Automatic lifecycle management of all devices’ software.

# The architecture

The SmartAL is a social and health support ICT solution, including telemonitoring of vital signs (such as weight, blood pressure, pulse, glucose), accessible via TV with interactive IPTV mediaroom service and/or via an Android smartphone, as well as through a webbrowser.

For the caregiver / professional a front office, accessed via PC or tablet, is available. Multiple user profiles are available to configure the platform at various levels and manage the daily tasks. Having this setup done, the SmartAL platform makes available all the configured services and manages the schedule of each SmartAL user, generating automatic alerts and notifications to end-users and caregivers.





## Application areas



### **Social care entities**

- Daily activity management, increasing service quality;
- Social service management and report (e.g. home care support);
- Health service management and report;
- Prevent social isolation among customers and encourage a healthier lifestyle, improving their quality of life;
- Support more demanding customers, increasing profits.



### **Health professionals or Health entities (e.g. hospitals, clinics)**

- Enhanced communication with clients, creating a better relationship/service;
- Fast response at anomalous situations, enabling Health prevention instead of correction;
- Ability to engage more clients to their own healthcare company, increasing profits;
- Real-time secure access to medical health records anywhere, stored in an anonymous and encrypted medical health database.



### **Tele-education (e.g. schools)**

- Allow homebound clients/students to access interactive educational content;
- Live interaction using video, audio and chat;
- Supports remote camera control in the classroom;
- File transfer/sharing;
- Classroom recording for offline attendance.



## About Altice Labs

Delivering key telecommunications technologies since 1950, Altice Labs has been shaping the future of technology, enabling Communications Service Providers and Enterprises to offer advanced and differentiated services to their customers and users.

Altice Labs is an innovation and transformation catalyst supported on a strong and dynamic Innovation Ecosystem. Through technology, we are committed to improve people's lives and the way in which companies do business.



[www.alticelabs.com](http://www.alticelabs.com)